

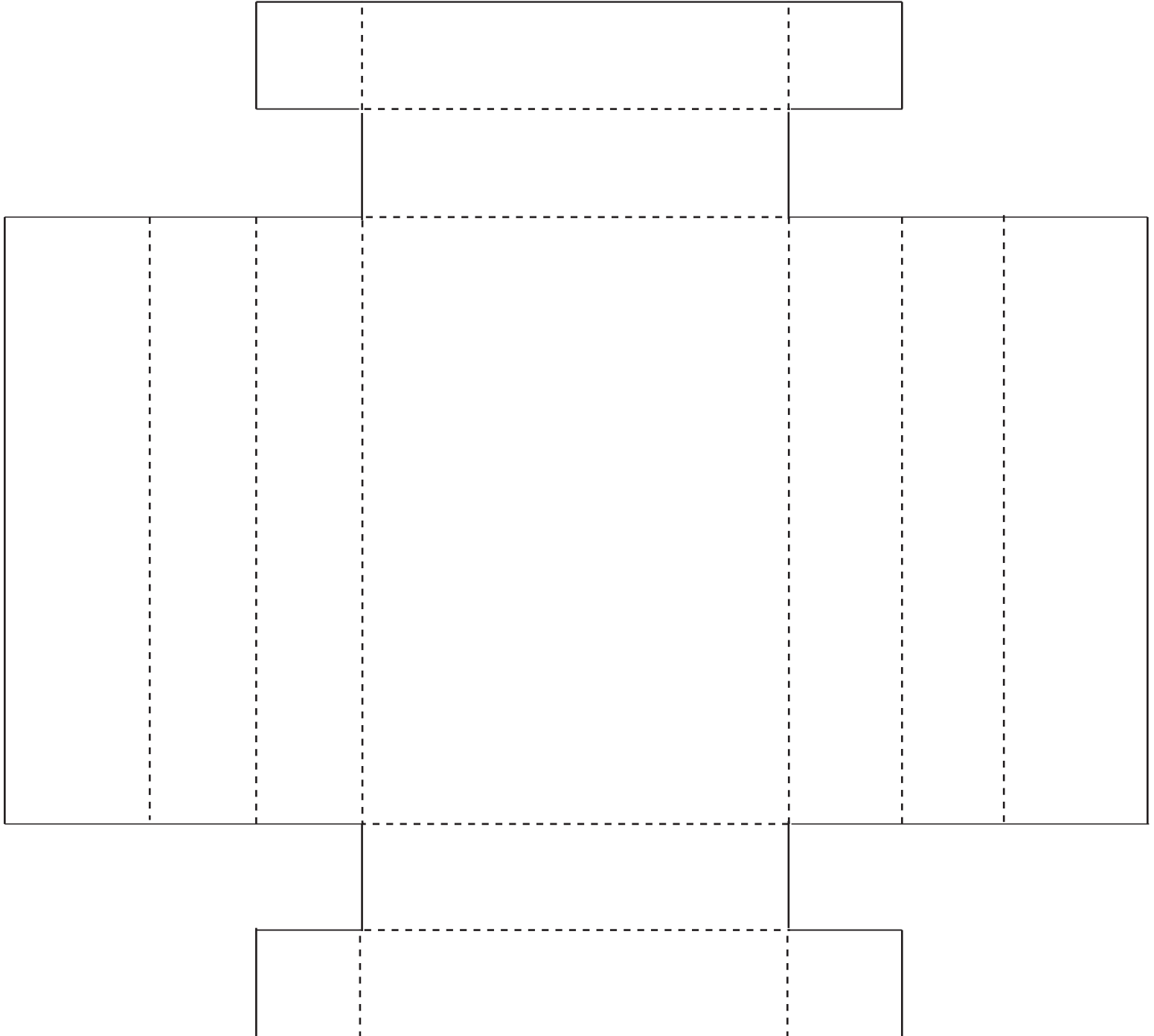
..... fold these lines

_____ cut these lines

See a demonstration of how to make these boxes in the Gingerbread Man Soap Project video at www.soapqueen.tv!

Gingerbread Man Box

1. Print template out on plain paper (skip steps 1 & 2 if your printer will print onto cardstock).
2. Trim out template and trace onto cardstock.
3. Trim out cardstock.
4. Score on dotted lines and fold.
5. Glue and fold the short sides towards the center.
6. Glue and fold the longer sides towards the center - making sure to capture the little 'T' flap ends from the short side.
7. If using a wet glue place a heavy object in box until dry.



Bramble Berry 2138 Humboldt Street, Bellingham, Washington 360.734.8278

Create www.brambleberry.com **Inspire** www.soapqueen.com **Watch** www.soapqueen.tv